



MM15 E-Mag

Application - 4000 lb. holding force dual voltage, dual current Maglock for interior or perimeter doors where ultra-high security and compact size are required.

Function - MM15 is a hybrid design with two spring loaded, hardened steel jaws. In the event of a forced entry attempt, the mandibles rotate inward, clamping down and capturing the edges of the armature.

Features and Benefits

- 4000 lb. holding force provides an unmatched level of security
- Dual voltage (12/24) and dual current (AC/DC) operation
- Mounting plate provides easy and accurate installation
- Fail safe, but can be installed with a battery backup power supply
- Optional door position switch and anti-tamper switch
- Prepped for use with 1/2" conduit
- Optional finishes via dress cover include, black, polished brass (US03) and satin brass (US04)
- Brackets and accessories to configure any opening
- Indoor use only
- UL listed

Specification Data

Holding Force: 4,000 lbs. [1,814 Kg.]

Current Draw and Voltage:

AC Current: 130mA max @ 12VAC, 250mA max @ 24VAC

DC Current: 100mA max @ 12VDC, 200mA max @ 24VDC

Operating Temperature: -40 to +140F [-40 to +60C]

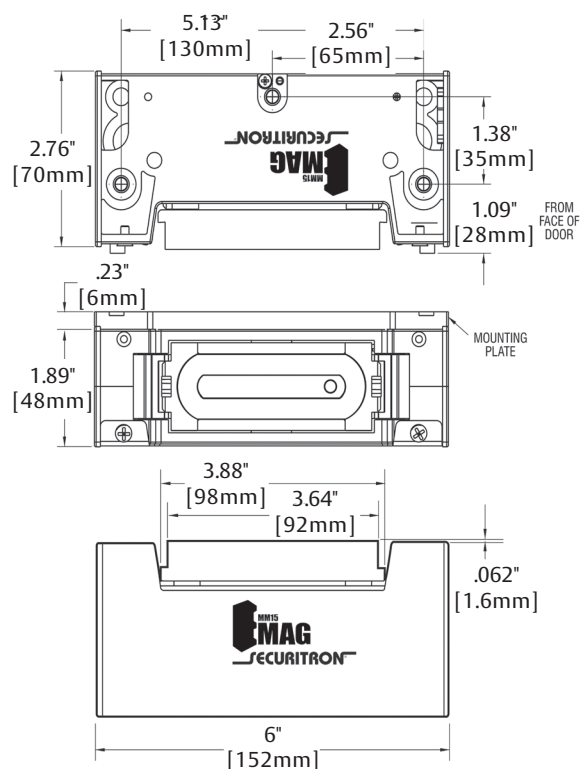
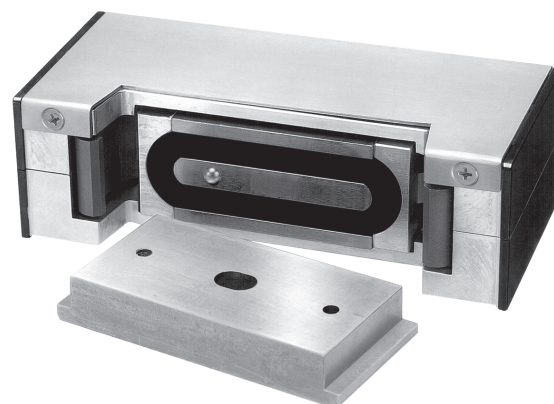
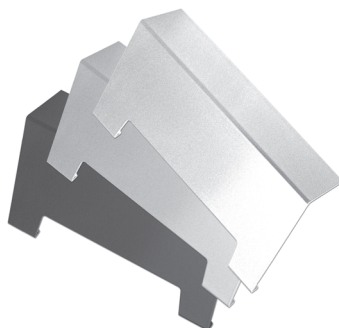
Shipping Weight: 6 lbs.

Warranty: MagnaCare Lifetime Replacement Warranty

How To Order

Part #	Description
MM15	4000 lb. Electromechanical Maglock, Satin Stainless
MM15G	4000 lb. Electromechanical Maglock, Satin Stainless, Conduit Option
MM15DT	4000 lb. Electromechanical Maglock, Satin Stainless, Door Position/Tamper Switch Option
MM15GDT	4000 lb. Electromechanical Maglock, Satin Stainless, Conduit Option, Door Position/Tamper Switch Option

MM15 finishes are determined by snap-on metal dress covers. The Brushed Stainless dress cover is provided standard with the MM15. Black, Polished Brass and Satin Brass dress covers must be purchased separately.



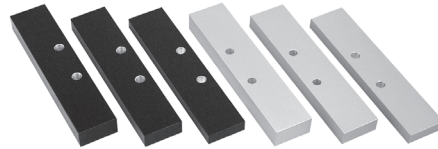
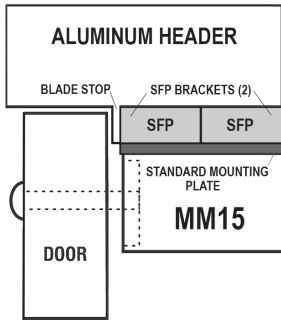
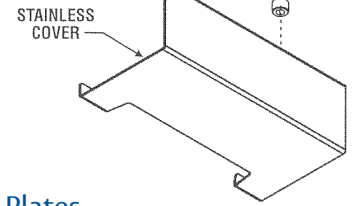
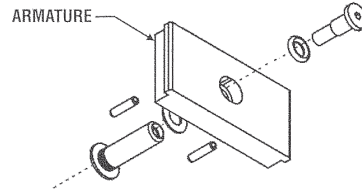
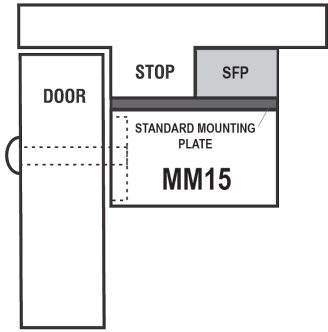
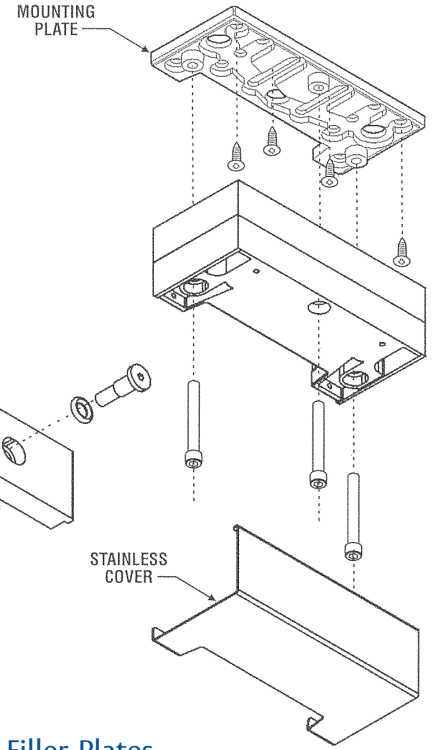
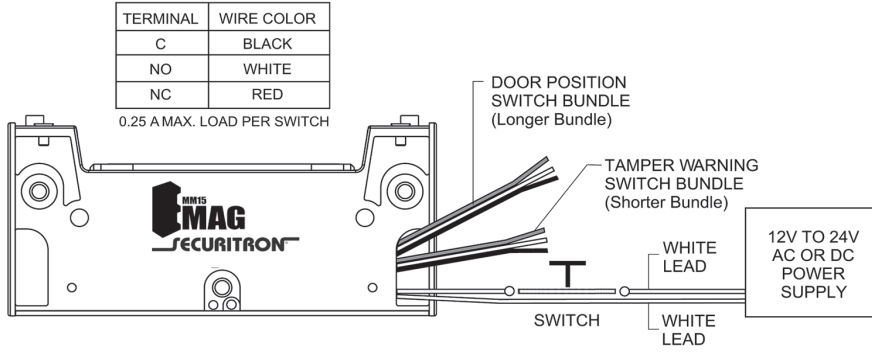
(DC) Dress Covers

How To Order

Part #	Description
DC-MM15BK	MM15 Dress Cover, Black
DC-MM15BP	MM15 Dress Cover, Polished Brass
DC-MM15BS	MM15 Dress Cover, Satin Brass

MM15 finishes shown on page 83

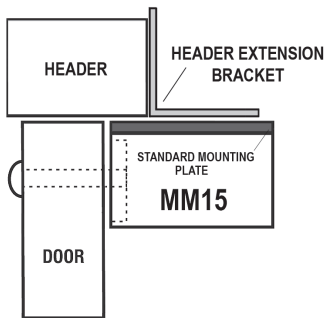




(SFP) Stop Filler Plates

How To Order

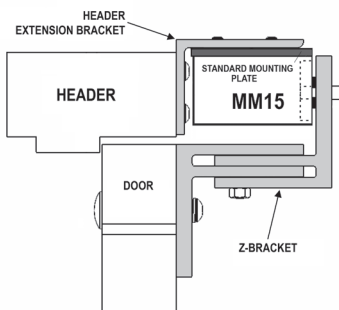
Size	Part #	Description
3/8"	SFP-3/8CLMM15	MM15 SFP, 3/8" Clear - 6"
3/8"	SFP-3/8BKMM15	MM15 SFP, 3/8" Black - 6"
1/2"	SFP-1/2CLMM15	MM15 SFP, 1/2" Clear - 6"
1/2"	SFP-1/2BKMM15	MM15 SFP, 1/2" Black - 6"
5/8"	SFP-5/8CLMM15	MM15 SFP, 5/8" Clear - 6"
5/8"	SFP-5/8BKMM15	MM15 SFP, 5/8" Black - 6"



(HEB) Header Extension Brackets

How To Order

Size	Part #	Description
1"	HEB-1CL-MM15	MM15 HEB, 1" Clear - 6"
1"	HEB-1BK-MM15	MM15 HEB, 1" Black - 6"
2"	HEB-2CL-MM15	MM15 HEB, 2" Clear - 6"
2"	HEB-2BK-MM15	MM15 HEB, 2" Black - 6"
3"	HEB-3CL-MM15	MM15 HEB, 3" Clear - 6"
3"	HEB-3BK-MM15	MM15 HEB, 3" Black - 6"



(Z) Z Bracket Kits

How To Order

Part #	Description
Z-MM15CL	Z Bracket MM15, Clear - 6"
Z-MM15BK	Z Bracket MM15, Black - 6"

Listings

• MM15 - Underwriter's Laboratories: File R21226



(UNL) UnLatch[®] Strike

Application - UnLatch is for any application where an electric strike would be used for a cylindrical/tubular lockset. UnLatch supports full dead latch function, releases under pressure and includes a latch status monitoring output.

Features and Benefits

- *No cutting or altering* of the jamb required!
- Fits standard ANSI 4-7/8" strike cutout
- Also available in Polished Brass (US03) and Oil Rubbed Bronze (US10B)
- Motorized, no solenoids
- Fully concealed installation
- Maintains dead-latch function at all times
- Continuous duty
- Releases under pre-load
- Latch status sensor is standard (SPDT)
- UL Listed

Specification Data

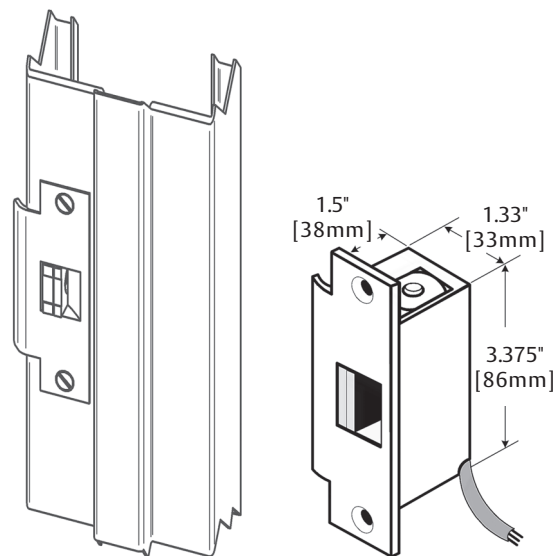
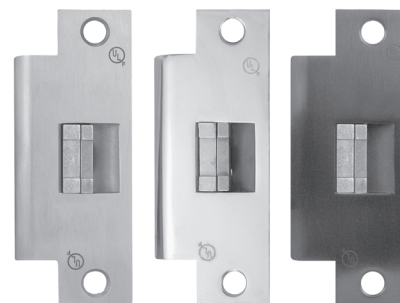
Current Draw:
 12VDC-40mA continuous, minimum 300mA when operating
 24VDC-40mA continuous, minimum 200mA when operating
 Higher capacity supply (1-3 Amps) is recommended for startup inrush to achieve best operation under pre-load
 Operating Temperature: -20 to +125F [-29 to +52C]
 Shipping Weight: 1.6 lbs.
 Warranty: MagnaCare Lifetime Replacement Warranty

How To Order

Part #	Description
UNL-12	UnLatch For Cylindrical Locks, 12VDC
UNL-24	UnLatch For Cylindrical Locks, 24VDC
UNL-12-US3	UnLatch 12VDC, Polished Brass Finish
UNL-24-US3	UnLatch 24VDC, Polished Brass Finish
UNL-12-10B	UnLatch 12VDC, Oil Rubbed Bronze Finish
UNL-24-10B	UnLatch 24VDC, Oil Rubbed Bronze Finish
FSUNL-12	Fail Safe/Fail Secure Unlatch Module, 12VDC
FSUNL-24	Fail Safe/Fail Secure Unlatch Module, 24VDC

FSUNL Option: FSUNL allows the UNL and MUNL to become selectable for either "Fail Safe" or "Fail Secure" operation

FSUNL



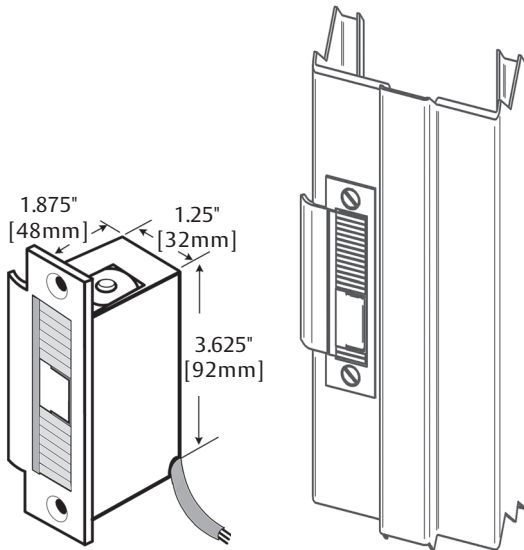
NOTE: UNL requires three wires for operation - continuous positive DC, continuous negative DC, and a trigger input to unlock

UNL finishes shown on page 83





(MUNL) Mortise UnLatch® Strike



Application - Mortise UnLatch is for any application where an electric strike would be used for a mortise type lock. The Mortise UnLatch includes field adjustability for latch and deadlatch positions, releases under pressure and includes a latch status monitoring output.

Features and Benefits

- *No cutting or altering* of the jamb required!
- Fits standard ANSI 4-7/8" strike cutout
- Also available in Polished Brass (US03) and Oil Rubbed Bronze (US10B)
- Motorized, no solenoids
- Fully concealed installation
- Maintains dead-latch function at all times
- Continuous duty
- Releases under pre-load
- Latch status sensor is standard
- One model works with most North American Mortise Locks (Sargent 7800 and 8200 require tab kit model #STK-1 for retrofit installations)
- UL Listed

Specification Data

Current Draw:
 12VDC-40mA continuous, minimum 700mA when operating
 24VDC-40mA continuous, minimum 500mA when operating
 Higher capacity supply (1-4 Amps) is recommended for startup inrush to achieve best operation under pre-load
 Operating Temperature: -20 to +125F [-29 to +52C]
 Shipping Weight: 2 lbs.
 Warranty: MagnaCare Lifetime Replacement Warranty

How To Order

Part #	Description
MUNL-12	Mortise UnLatch 12VDC
MUNL-24	Mortise UnLatch 24VDC
MUNL-12-US3	Mortise UnLatch 12VDC, Polished Brass
MUNL-24-US3	Mortise UnLatch 24VDC, Polished Brass
MUNL-12-10B	Mortise UnLatch 12VDC, Oil Rubbed Bronze Finish
MUNL-24-10B	Mortise UnLatch 24VDC, Oil Rubbed Bronze Finish
STK-1	Retrofit Tab Kit for Sargent 7800 & 8200
FSUNL-12	Fail Safe/Fail Secure Mortise UnLatch Module, 12VDC (See page 22)
FSUNL-24	Fail Safe/Fail Secure Mortise UnLatch Module, 24VDC (See page 22)

NOTE: MUNL requires three wires for operation - continuous positive DC, continuous negative DC, and a trigger input to unlock

MUNL finishes shown on page 83

Patents, Approvals and Listings

- Patent Numbers: #6,022,056, #6,581,991, #6,902,214
- UNL & MUNL - Underwriter's Laboratories: File R18923
GXAY & GXAY7 Electric Strike for Fire Door (UL 10B & UL 10C)
- UNL & MUNL - ZHEM Latching Hardware (Windstorm)

